

**ICE ANALYSIS  
ANALYSE DE GLACE**

Northern Hudson Bay  
Baie d'Hudson nord

V 1800Z

**14 NOV/NOV 2008**

BASED ON/BASEE SUR:

RECON:

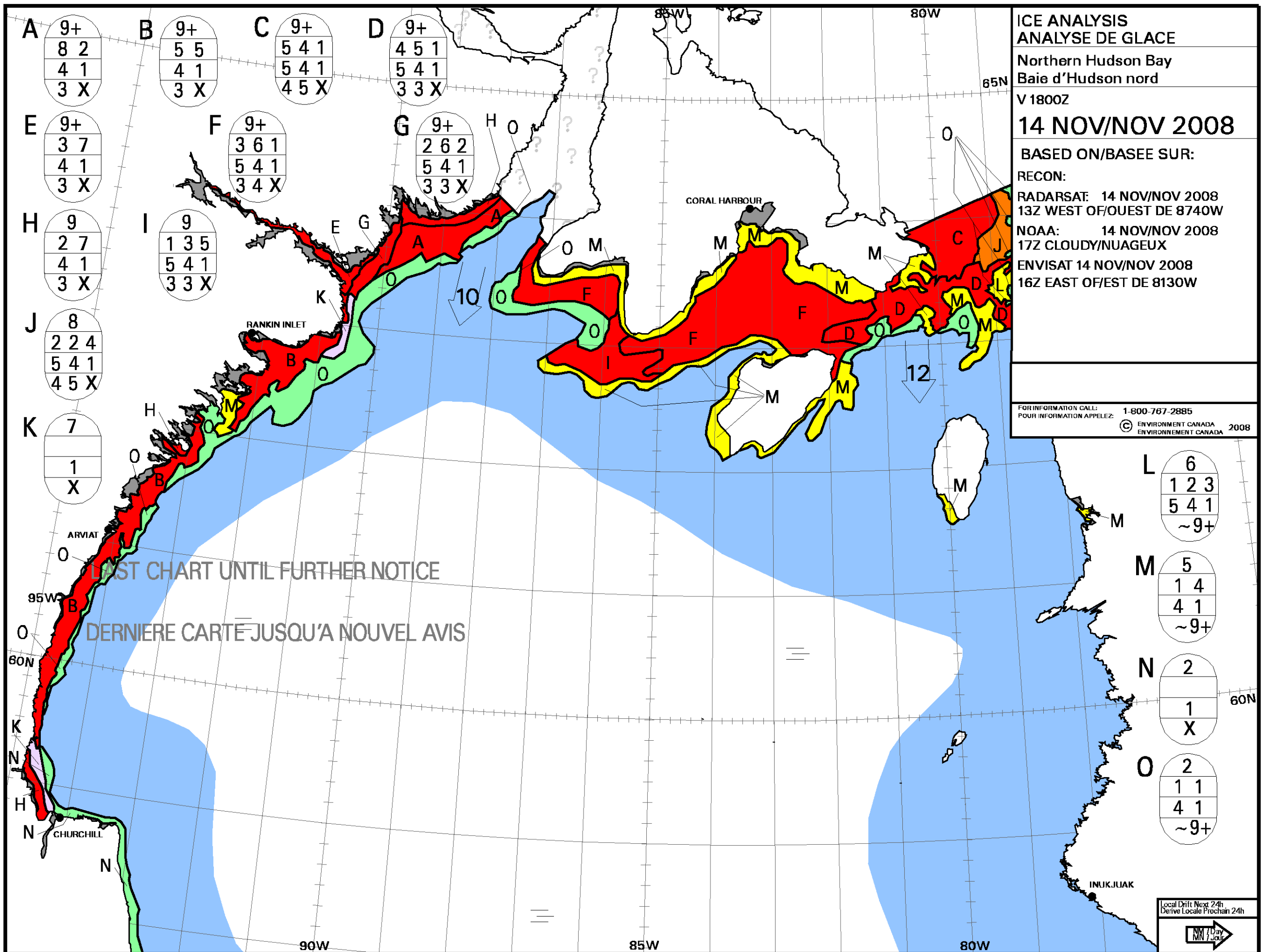
RADARSAT: 14 NOV/NOV 2008  
13Z WEST OF/OUEST DE 8740W

NOAA: 14 NOV/NOV 2008  
17Z CLOUDY/NUAGEUX

ENVISAT 14 NOV/NOV 2008  
16Z EAST OF/EST DE 8130W

FOR INFORMATION CALL:  
POUR INFORMATION APPELEZ: 1-800-767-2885

ENVIRONMENT CANADA  
ENVIRONNEMENT CANADA 2008



A  
9+  
8 2  
4 1  
3 X

B  
9+  
5 5  
4 1  
3 X

C  
9+  
5 4 1  
5 4 1  
4 5 X

D  
9+  
4 5 1  
5 4 1  
3 3 X

E  
9+  
3 7  
4 1  
3 X

F  
9+  
3 6 1  
5 4 1  
3 4 X

G  
9+  
2 6 2  
5 4 1  
3 3 X

H  
9  
2 7  
4 1  
3 X

I  
9  
1 3 5  
5 4 1  
3 3 X

J  
8  
2 2 4  
5 4 1  
4 5 X

K  
7  
1  
X

L  
6  
1 2 3  
5 4 1  
~9+

M  
5  
1 4  
4 1  
~9+

N  
2  
1  
X

O  
2  
1 1  
4 1  
~9+

WMO Colour Code - Concentration

Code de couleurs de l'OMM - Concentration

Ice Free  
Libre de glace

Fast Ice  
Banquise côtière

< 1/10

1-3/10

4-6/10

7-8/10

9-10/10

Undefined  
Indéterminée

New Ice  
Nouvelle glace

Nilas/Grey Ice  
Nilas/glace grise

Local Drift Next 24h  
Derive Locale Prochain 24h

